

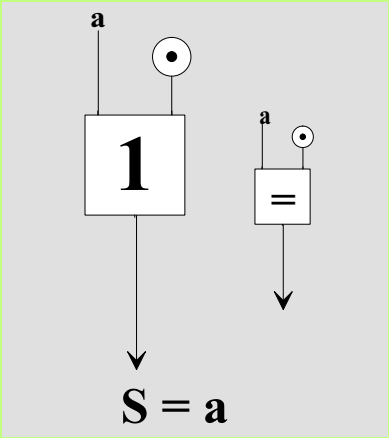
EXEMPLE L'OPERATEUR:

OUI

1- Faire le tableau de fonctionnement

2- Faire le schéma avec le repérage

LOGIGRAMME



SCHEMAS ELECTRIQUES

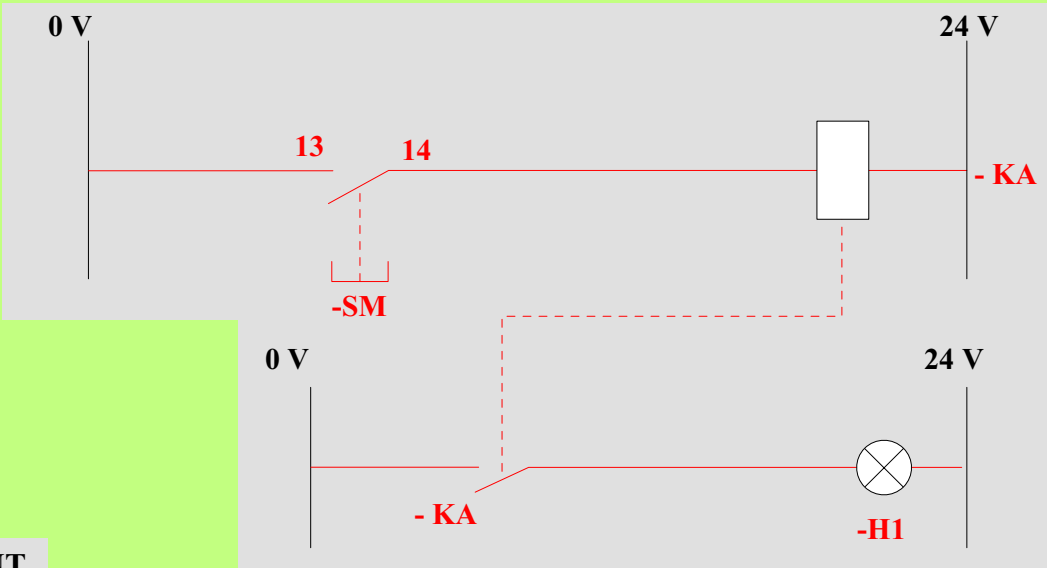
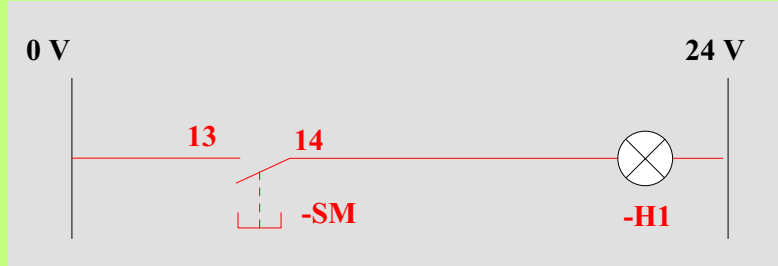


TABLEAU DE FONCTIONNEMENT

a	S
0	0
1	1

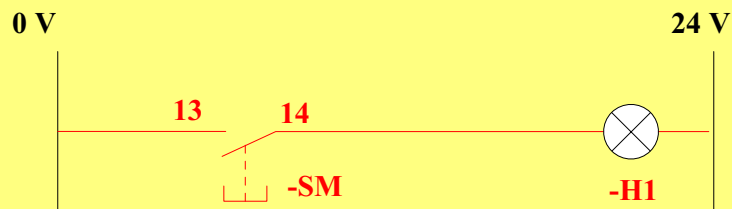
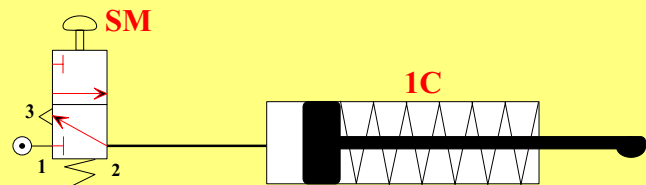
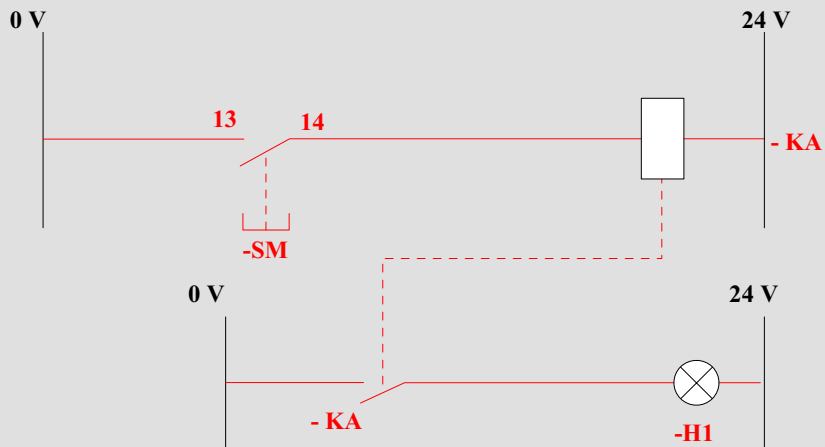
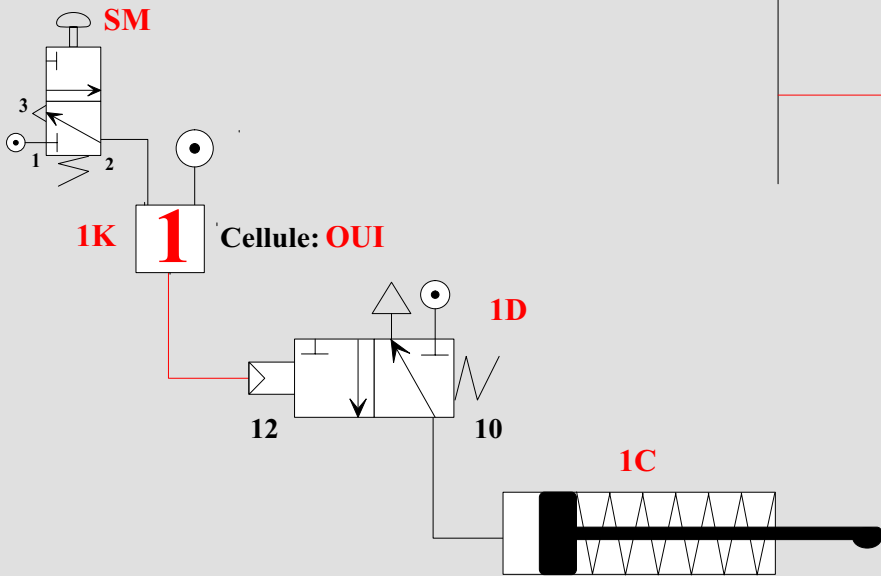
a	
0	1
0	1

AUTRE SOLUTION



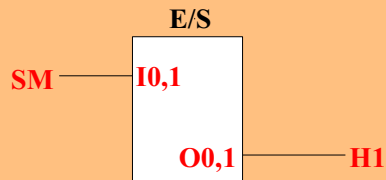
3- Faire le schéma pneumatique correspondant

PNEUMATIQUE

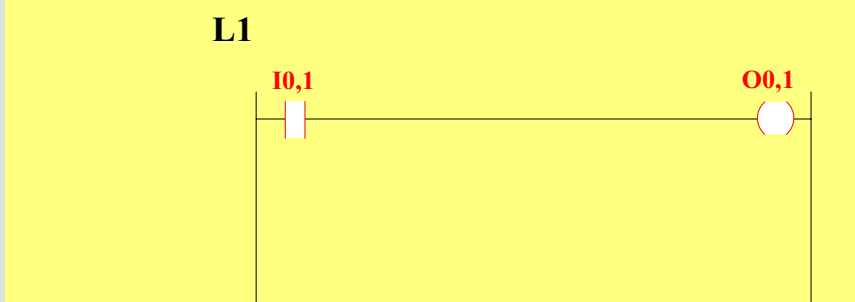
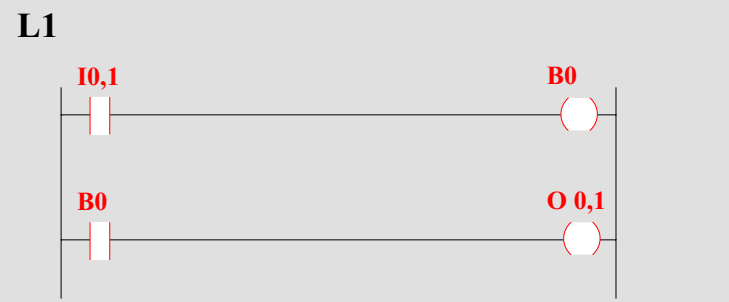
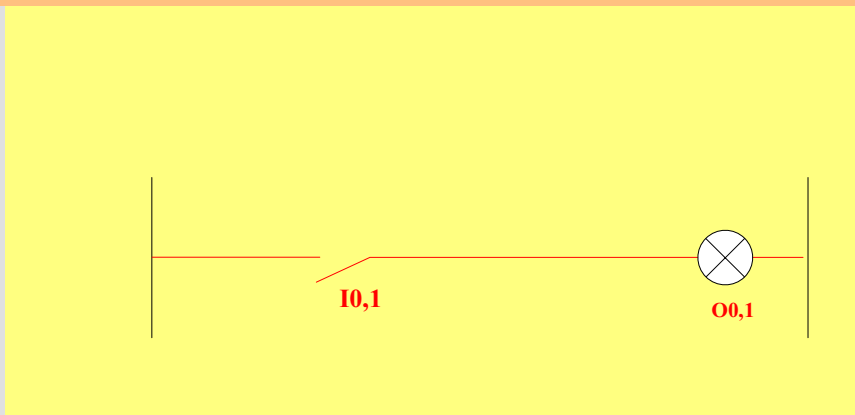
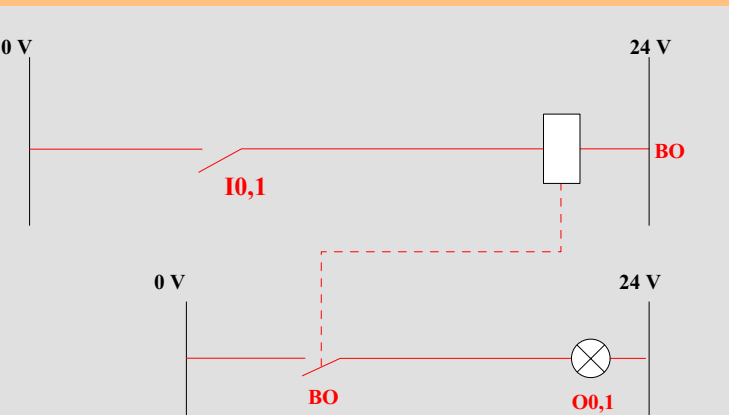


4- Programmer en Ladder cet opérateur

AFFECTATION DES ENTREES SORTIES



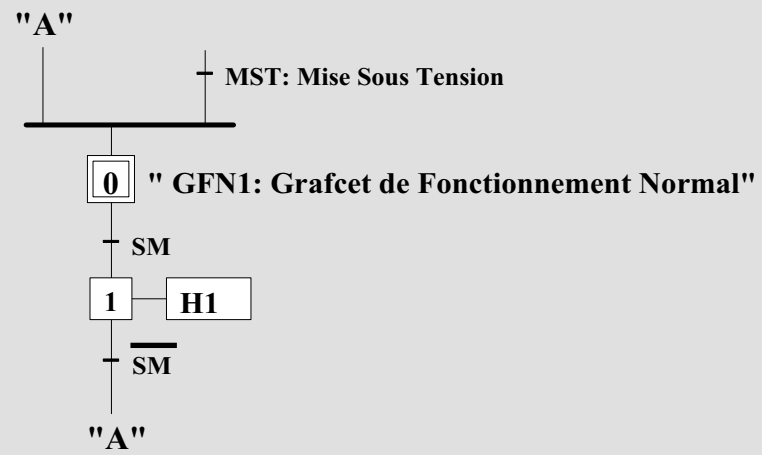
Programmation en ladder



5- Faire le grafcet point de vue PC



POINT DE VUE PC



6- Programmation en LIG: Langage Interprété Grafcet

- a) Grafcet point de vue TSX**
- b) Affectation entrées / sorties**
- c) Etablir le Chart, puis le POST**

POINT DE VUE PC

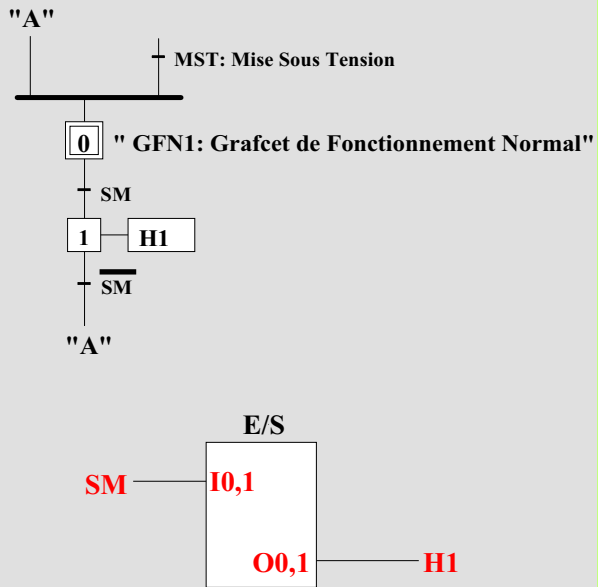
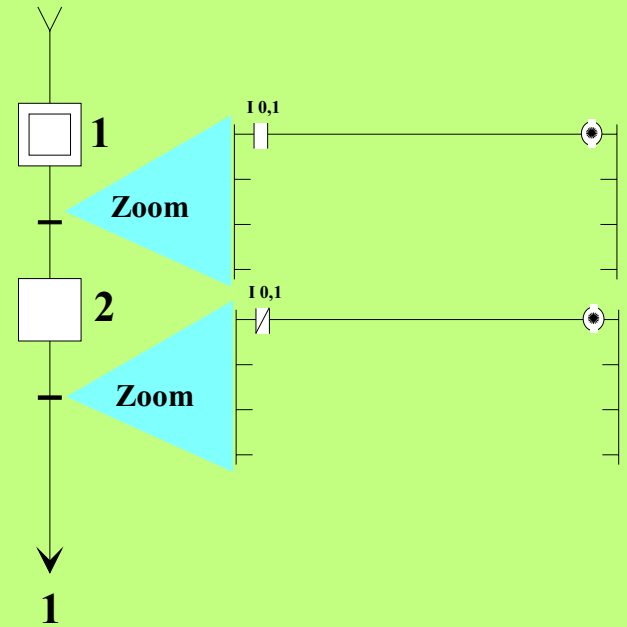
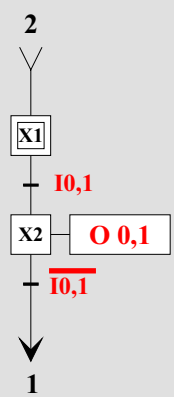


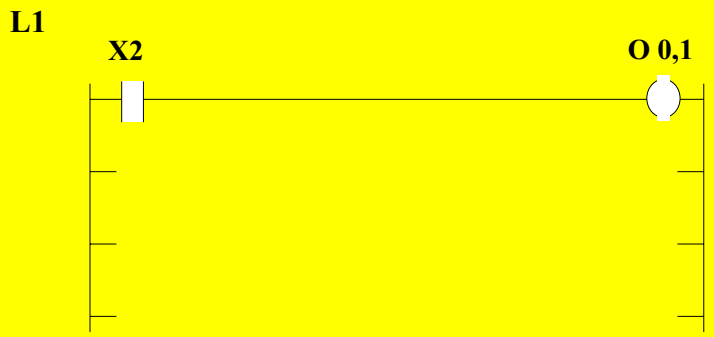
CHART 2



POINT DE VUE TSX17



POST





FIN