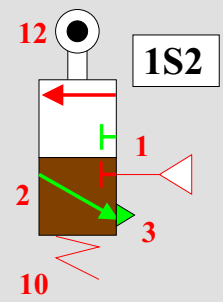


Relations: **grafice** / **cablage**

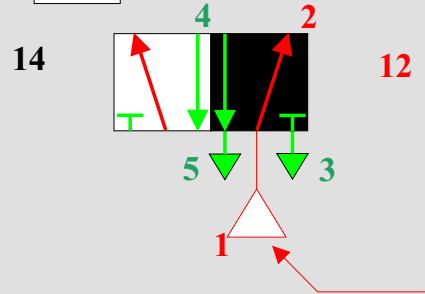
METTRE LES NOURRICES

**Mise
Sous
Pression**

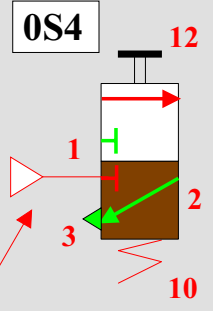
1A

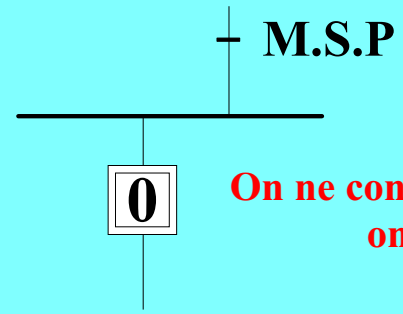


1V1



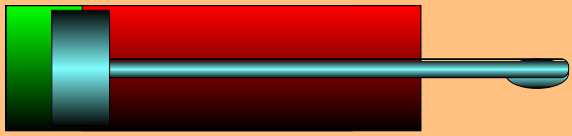
0S4



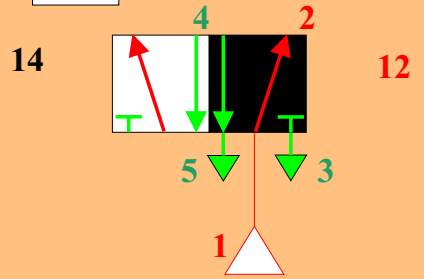


**On ne connait pas l'état initial
on ne met rien**

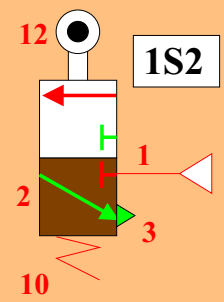
1A



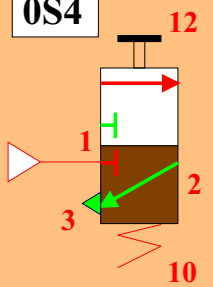
1V1

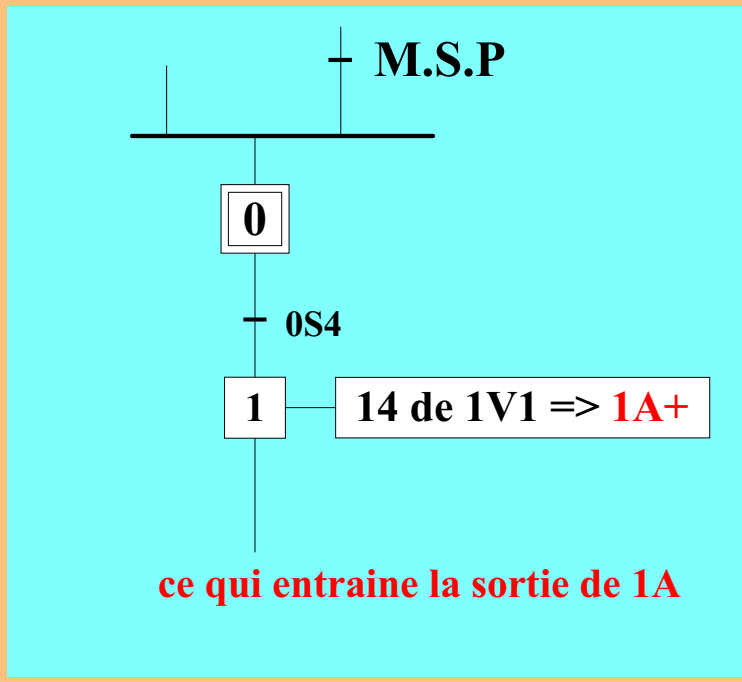
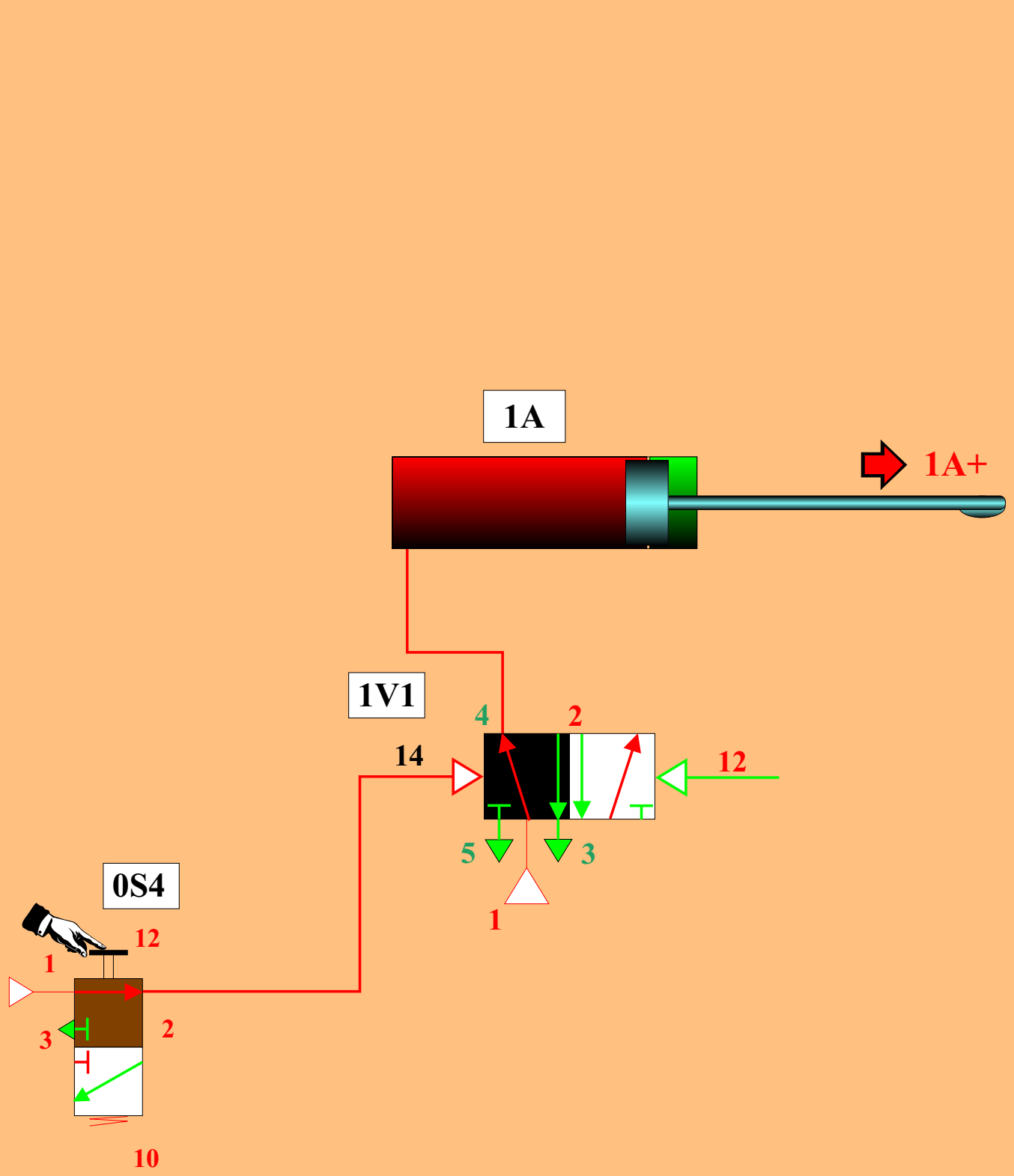


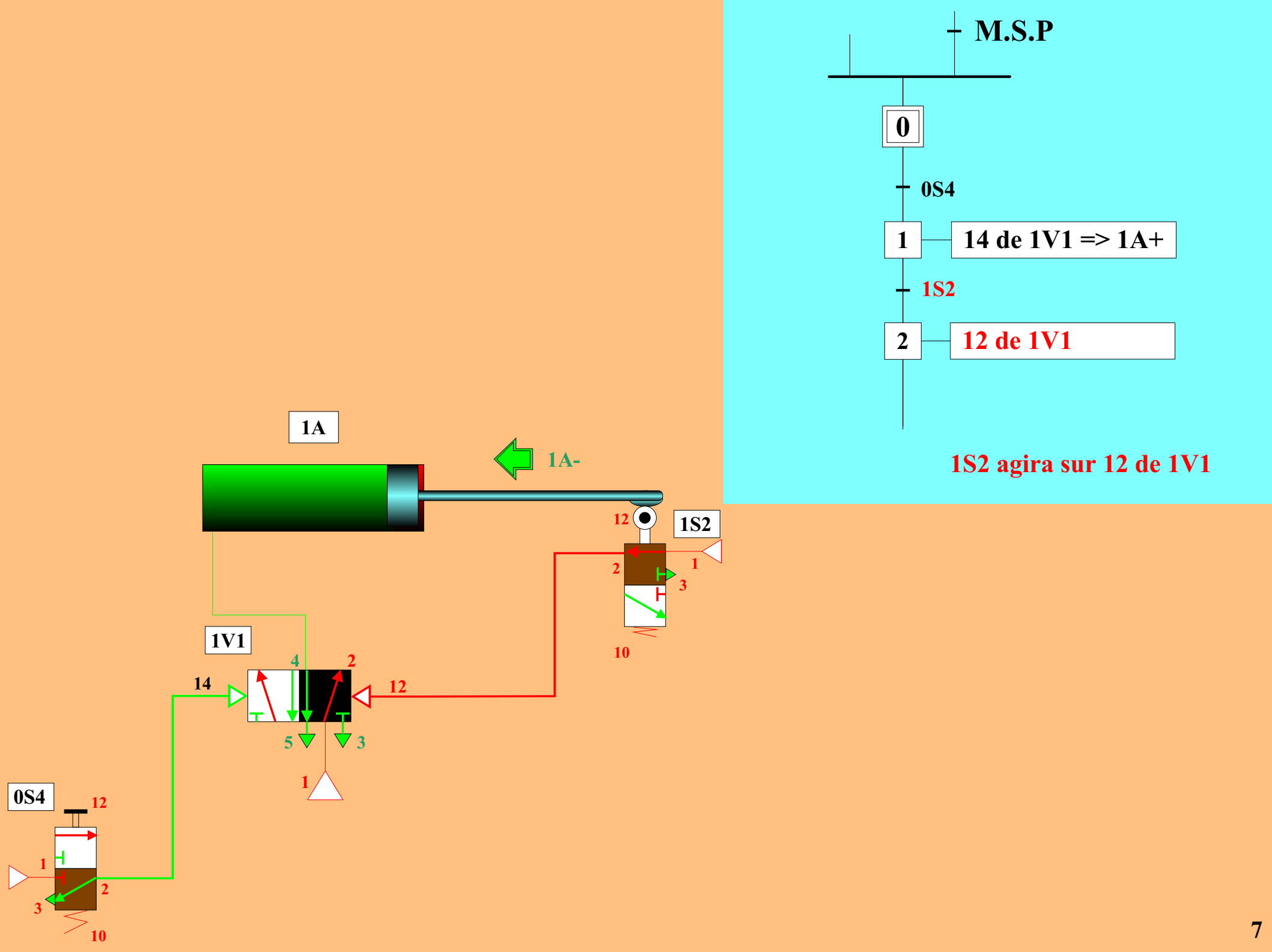
1S2

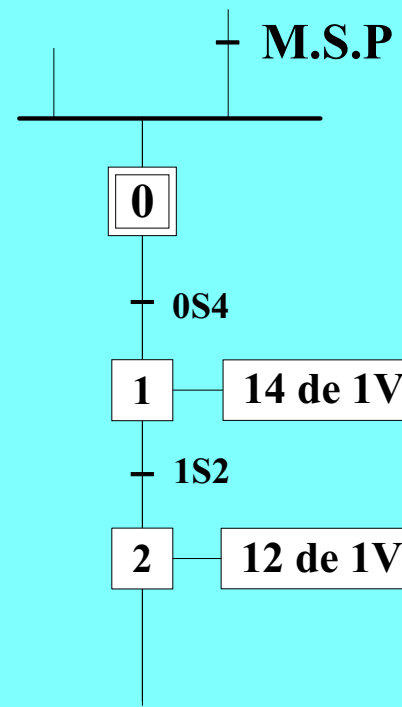


0S4

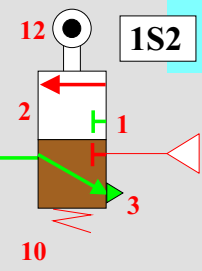
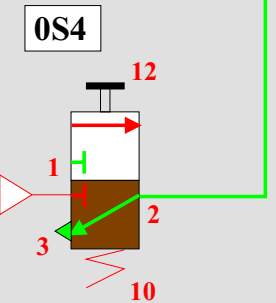
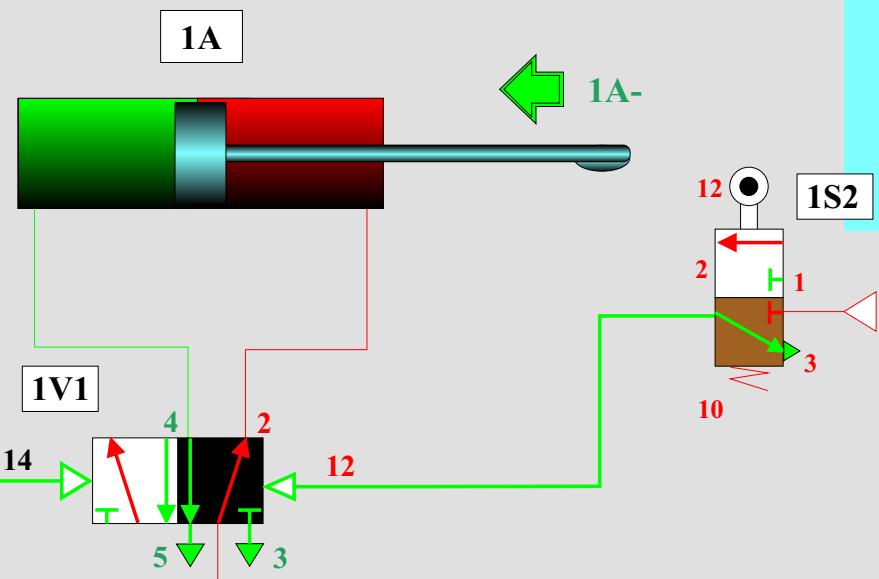


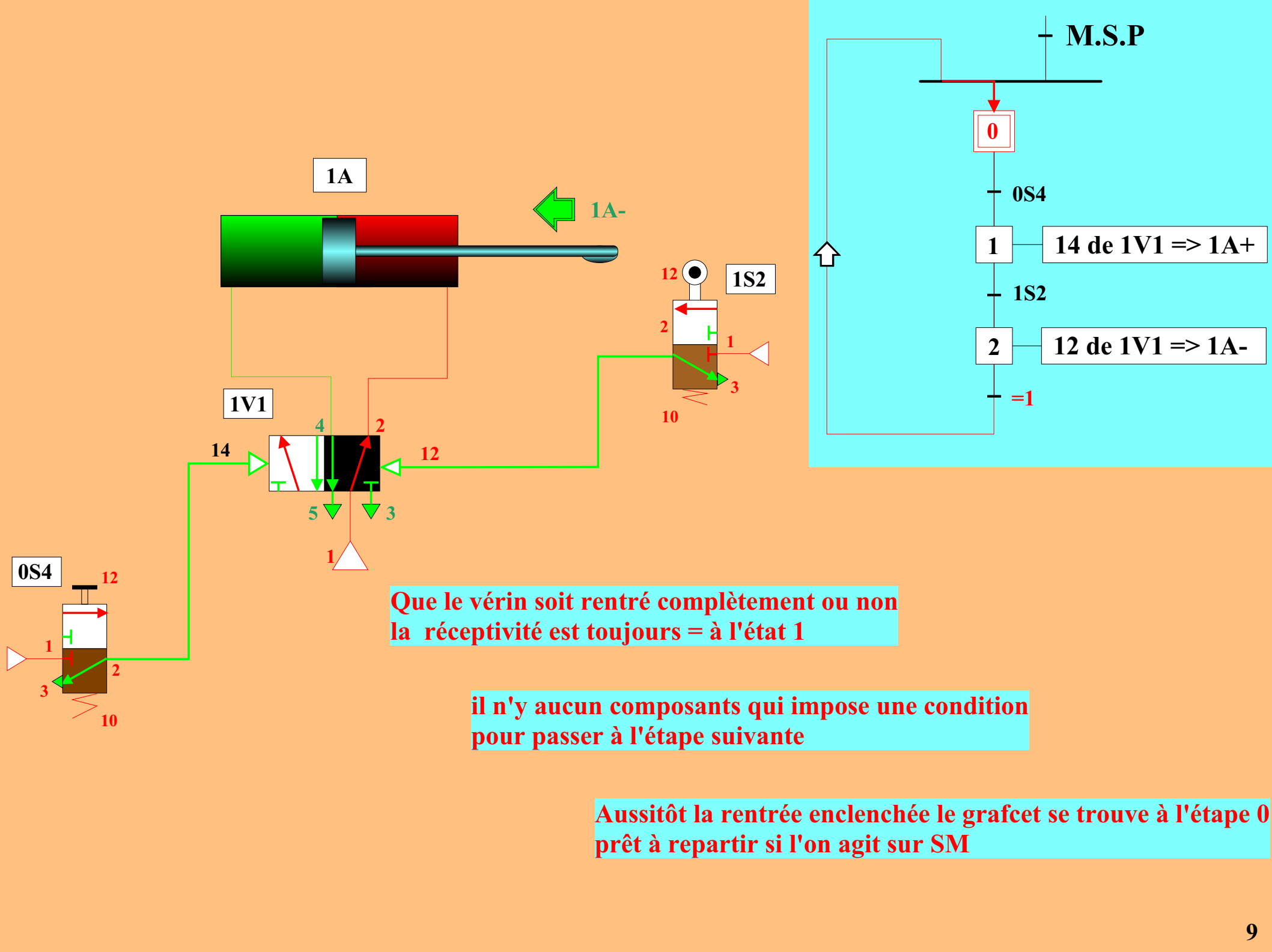






ce qui entrainera la rentrée de 1A





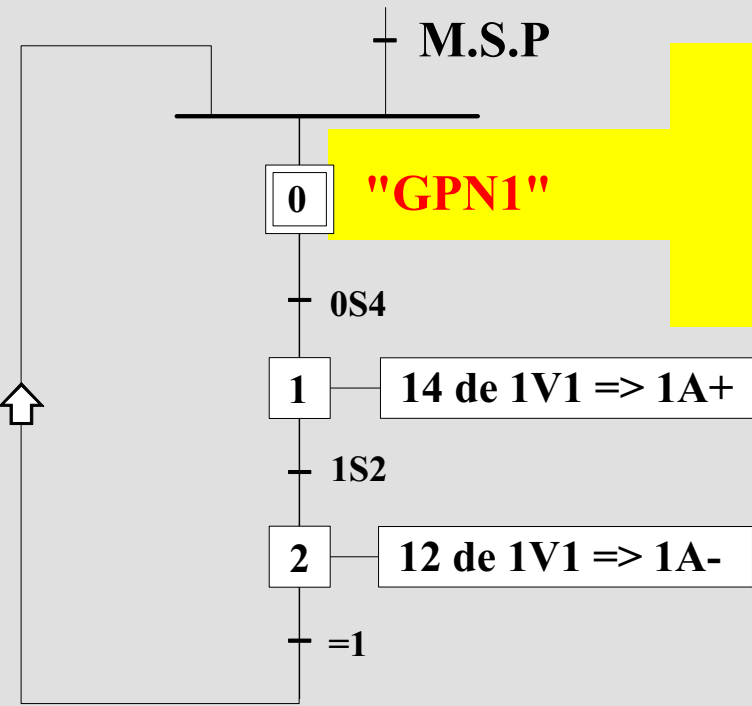
Que le vérin soit rentré complètement ou non la réceptivité est toujours = à l'état 1

il n'y aucun composants qui impose une condition pour passer à l'étape suivante

Aussitôt la rentrée enclenchée le grafcet se trouve à l'étape 0 prêt à repartir si l'on agit sur SM

On peut l'écrire de différentes manières
 en voici deux
 il y en a d'autres:

On met le nom du grafcet



Grafcet de
 Production
 Normale
 N°1

