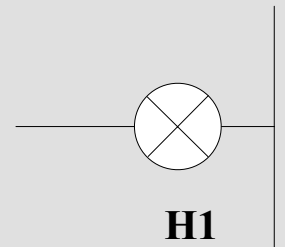
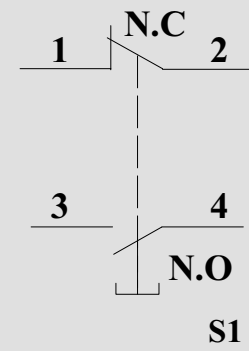
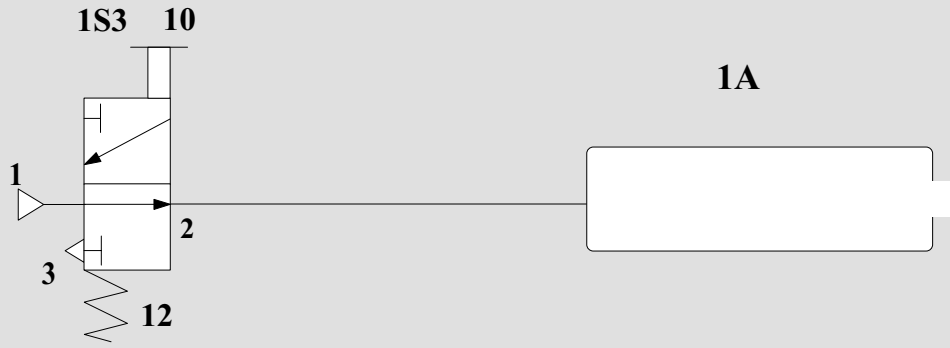
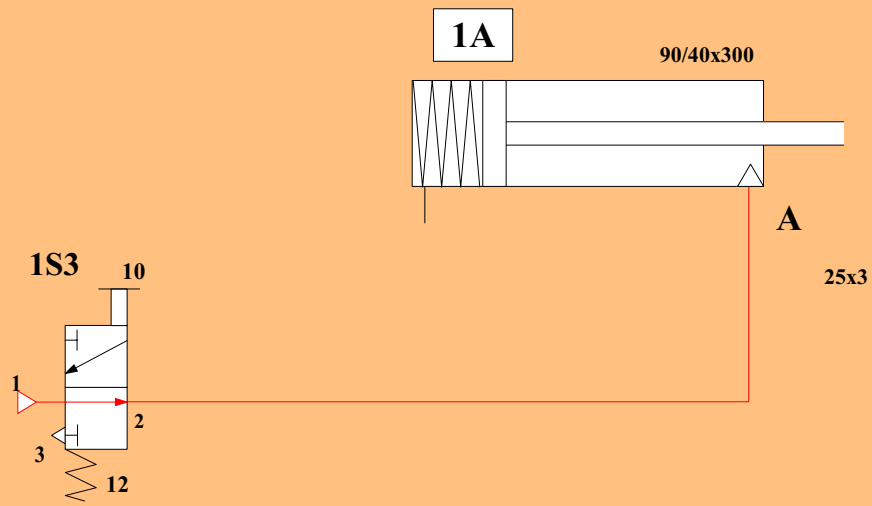


ANALOGIE PNEUMATIQUE-ELECTRIQUE



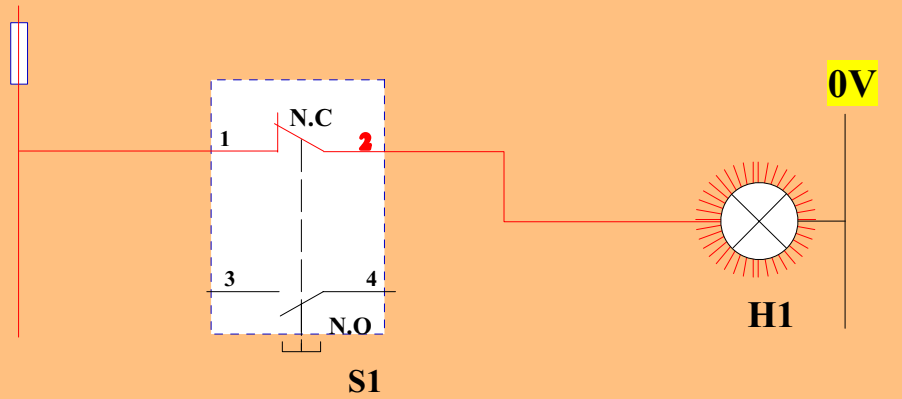
Poinçon



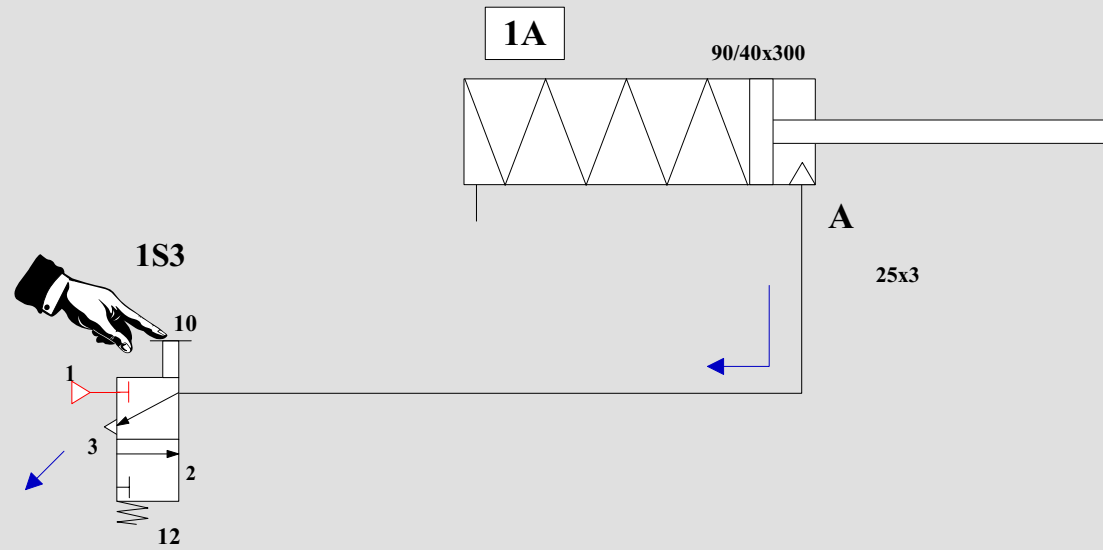
Position repos

24 V

F1

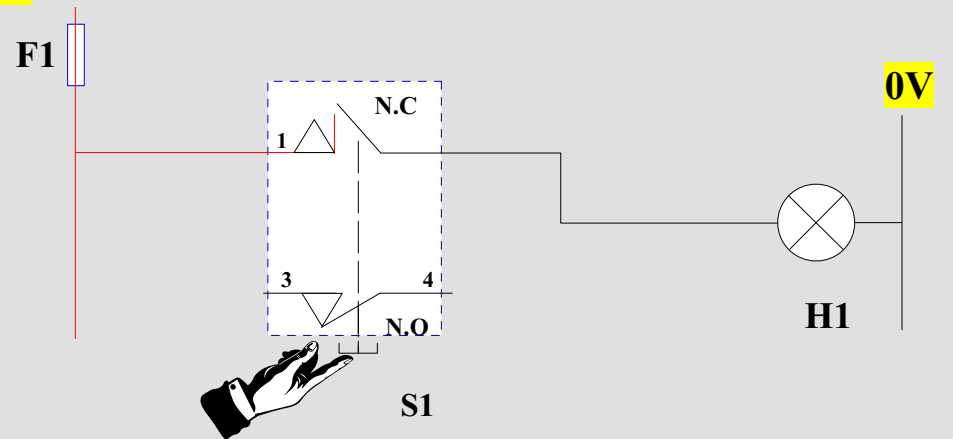


Poinçon

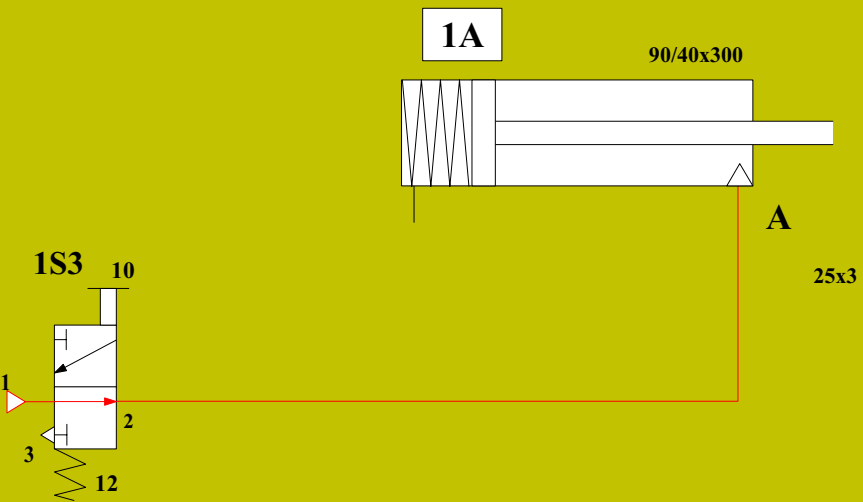


Position travail

24 V



Poinçon



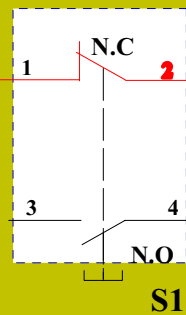
C'est une fonction NON

$$H = \overline{S1}$$

Le voyant ne sera allumé que si S1 n'est pas actionné

24 V

F1

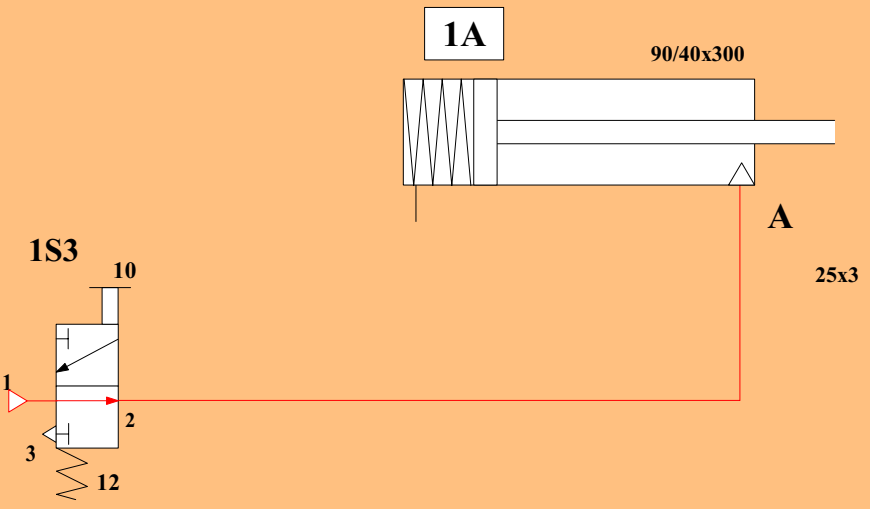


0V

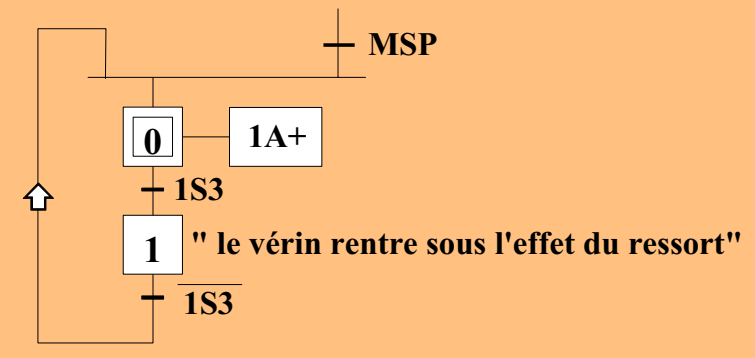


S1	H1
0	1
1	0

Poinçon



Point de vue PO:



24 V

